

Photo Loader

Version 1.1

**CASIO LCD Digital Camera Image Loading
Software
Macintosh version**

Instruction manual


- Macintosh is a trademark of Apple Computer Inc.
- CompactFlash and the  logo are trademarks of SanDisk Corporation.
- MultiMediaCard™ is a trademark of Infineon Technologies AG in Germany, and is licensed to MMCA (MultiMediaCard Association).
- Other company and product names are trademarks or registered trademarks of the respective companies.
- The contents of this document are subject to change without notice.
- The document has been prepared with our utmost effort. However, please contact us if there are any queries or errors.

Photo Loader is published by CASIO COMPUTER CO., LTD., and CASIO COMPUTER CO., LTD. retains all copyrights and other related rights except for those described above.

This document may not be copied in part or in entirety without permission. We assume no responsibility for any damage or loss or claims from third parties resulting from the use of Photo Loader.

Important!

- Install Photo Loader only in your computer's hard disk drive. Photo Loader will not function correctly if installed in a removable disk drive or a CD-R.

Table of contents

Introduction	4
■ To first-time users of Photo Loader	4
■ Features of Photo Loader	4
Automatically loads recording images from a digital camera or memory card.	4
Handling high-volume image data as a library	5
Automatically creates an HTML file in which recorded images can be searched in calendar format.	5
■ New functions of Photo Loader 1.1	5
■ Continuing use of Photo Loader 1.0 library	5
■ How to read this instruction manual	6
Operation conventions	6
Display screens	6
Starting Photo Loader	7
■ Checking communication status between digital camera and Photo Loader (for Serial connection)	8
Using Photo Loader	10
■ Loading an image	10
Loading an image automatically	10
Setting up automatic loading	11
Manually loading images (for Card/USB connection)	18
Manually loading images (for Serial connection)	19
Loading images other than those recorded by digital cameras	22
Handling image loading errors (for “Sort by recording date”)	25
■ Viewing a library	27
Viewing a library from Photo Loader	27
■ Deleting a library	29

■ Copying a library	31
■ Moving a library	33
■ Editing a library	35
Changing the title of a library	35
Rebuilding a library	37
Changing Photo Loader preferences	39
■ General	39
Library sort method	39
Folder to save library	40
Enter title after loading	40
Execute [View library] after saving	40
Selecting built-in template	40
Browser for viewing the library	40
■ Loading images in camera	41
Set up automatic loading	41
Confirmation	41
Original image	41
Convert image aspect based on rotation information	42
■ Version	42
Viewing help	43
Exiting from Photo Loader	44
Troubleshooting	45
Glossary	46

Introduction

This document describes the CASIO LCD digital camera image loading software, Photo Loader (hereafter called Photo Loader in this document). Photo Loader is a software application that runs on Macintosh. This document does not describe how to use Macintosh.

This document assumes that Photo Loader users are familiar with the following basic operations.

- **Mouse operations such as clicking, dragging, dragging and dropping**
- **Menu operation using the mouse**
- **Character entry using the keyboard**
- **Macintosh operation**

Read the instruction manual of your Macintosh and Mac OS for these basic operations.

■ To first-time users of Photo Loader

Read the “Read me” file in the CD-ROM provided. This describes how to check the system requirements for Photo Loader and how to install it on your Macintosh.

Check your operating environment and Mac OS version to be used before installing Photo Loader.

■ Features of Photo Loader

Automatically loads recording images from a digital camera or memory card.

Recording images can be automatically loaded into your Macintosh from a digital camera or memory cards.

Important!

- Recording images that can be loaded using Photo Loader are images saved in JPEG format and animation files saved in AVI format.

Handling high-volume image data as a library

Loaded image files will be managed in a folder by date, which is handled as a library.

Automatically creates an HTML file in which recorded images can be searched in calendar format.

An HTML file will be automatically created to allow searching of recorded images loaded manually or automatically and for viewing the contents of the library using a browser.

■ New functions of Photo Loader 1.1

Photo Loader 1.1 includes several new functions. For details, see the “readme” file on the CD-ROM.

■ Continuing use of Photo Loader 1.0 library

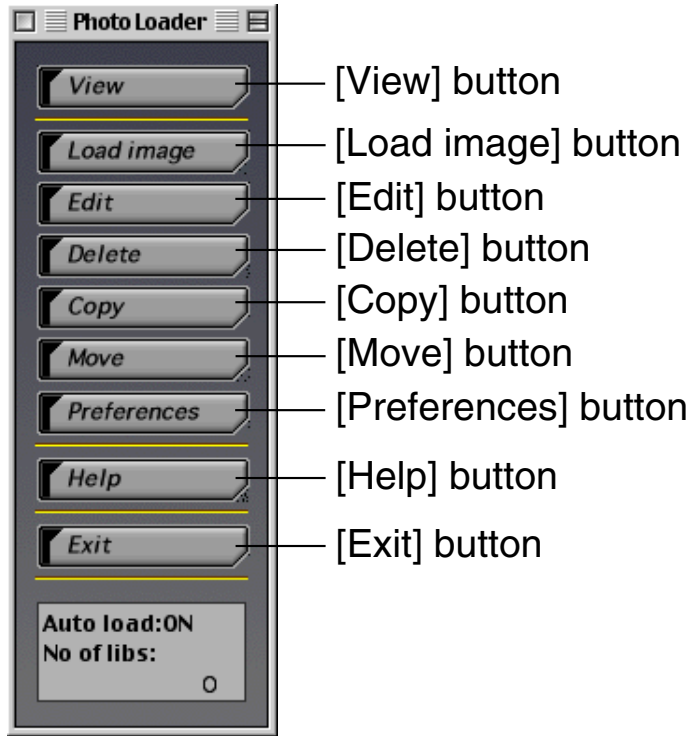
Users of Photo Loader 1.0 upgrading to version 1.1 must read the “Important” file on the CD-ROM to check the procedure before starting installation. Failure to install as directed may result in not being able to view previous library management data and calendar format HTML files in Photo Loader, or losing image files loaded.

■ How to read this instruction manual

Operation conventions

The description assumes that a mouse is used.

In this document, the buttons in dialog boxes are described as follows.



Display screens

- Note that the display screens used in this document may differ slightly from the actual screens, but this does not mean that the contents will be different.

Starting Photo Loader

Photo Loader must be installed on your Macintosh before starting. If not yet installed, install Photo Loader on your Macintosh.

1. Switch on your Macintosh.
2. Open the destination folder and double-click “Photo Loader 1.1E”.

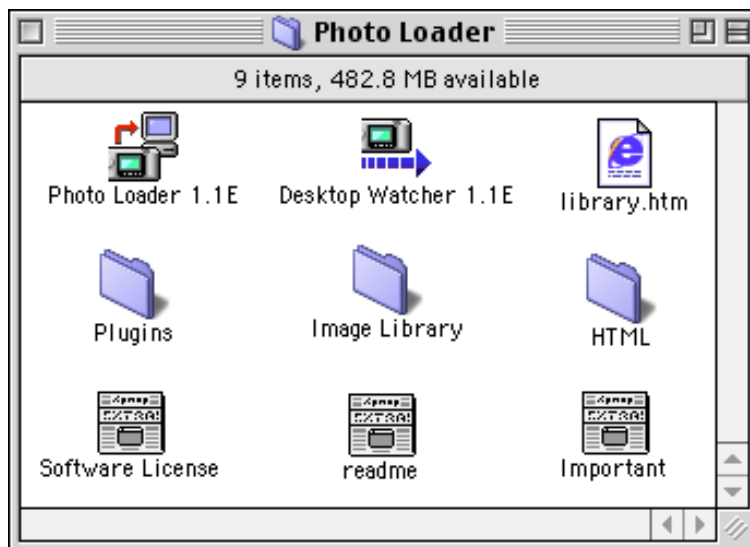


Photo Loader starts and the function buttons is displayed.



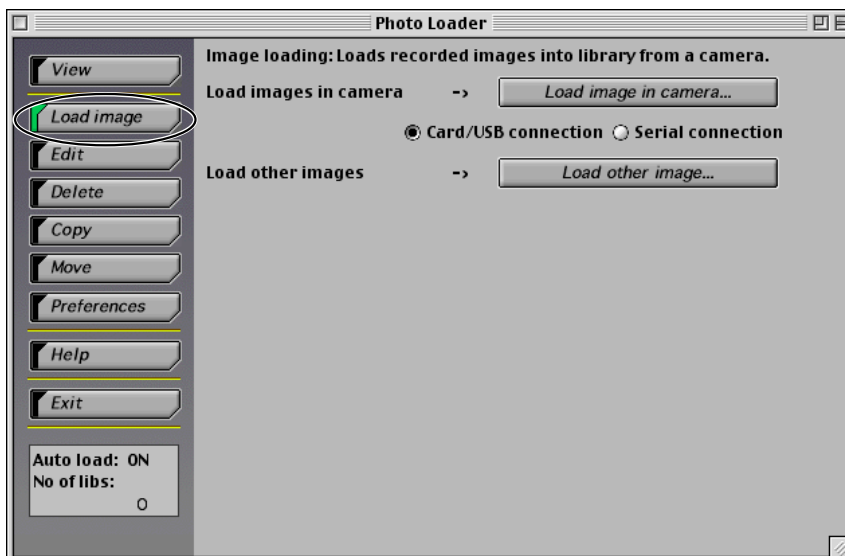
Photo Loader function buttons

■ Checking communication status between digital camera and Photo Loader (for Serial connection)

Important!

- A serial connection may not be possible depending on the digital camera model. For details, refer to the digital camera's user's guide.
- Before loading image data from a digital camera, check that communication between the digital camera and Photo Loader is successful using the following steps.
- * *Connect a digital camera to your Macintosh before checking the communication status. Read the instruction manual of the digital camera for connection details.*
- * *“Serial connection” means the connection to the modem port or printer port.*

1. Click the [Load image] button from the function buttons.



2. Select “Serial connection” and click [Load image in camera...] button.



3. Click the [Setting] button.

Click the [Cancel] button to cancel the operation.



- Check that the serial port on the Macintosh to which the cable is connected is the same as the serial port (modem port or printer port) displayed in the configuration dialog box.
- Read the Macintosh instruction manual for details of the serial port on your Macintosh.
- If the serial port connected is different from the port in the configuration dialog box, select the serial port connected.

4. Click the [Test] button.

- When “The camera has been recognized.” dialog box is displayed, click the [OK] button and then click the [OK] button in the preferences dialog box.
- When an error message is displayed, the digital camera is not communicating correctly with Photo Loader. See Photo Loader 1.1 Help for dealing with this.

Using Photo Loader

This section describes how to use Photo Loader.

■ Loading an image

This sub-section describes how to load image data onto your Macintosh using Photo Loader. You can choose from “Loading images automatically” and “Loading images manually”.

- * *Images to be loaded using Photo Loader should be image files saved in JPEG format or animation files saved in AVI format.*
- * *Connect peripheral units to your Macintosh before loading images. Read the instruction manual for the digital camera for connection details.*
- * *There are two methods of sorting images to be loaded: “Sort by recording date” and “Sort by date”. See “Library sort method” on page 39 for details.*

Loading an image automatically

You can have a supervisory program start and load images automatically from the digital camera connected to your Macintosh by setting automatic loading.

The automatic loading function only works in the following conditions.

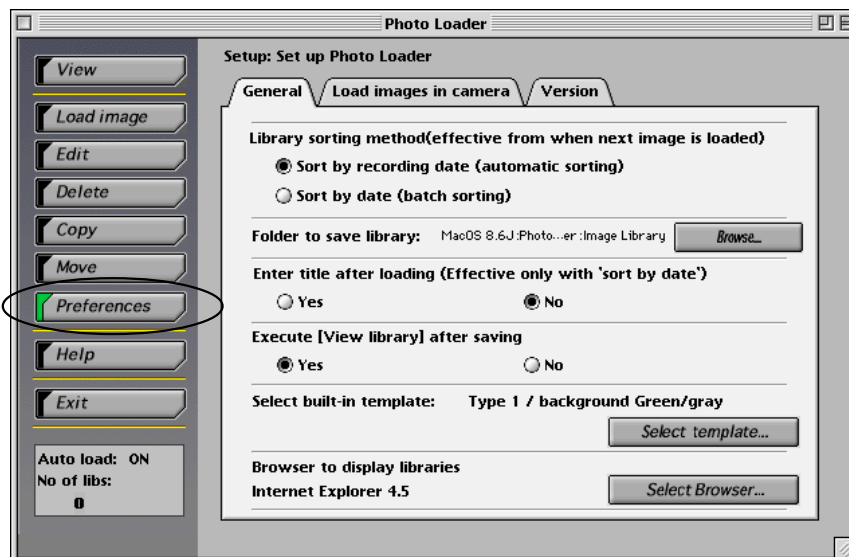
Peripheral unit connected	Connection method	Devices used for connection
Digital camera	USB connection	Special USB cable * The shape of the cable may vary depending on the digital camera used.
PC card adapter	PC card slot	<ul style="list-style-type: none">• Using a CompactFlash card• PC card adapter CA-10 (optional)• Using an SD memory card/ MultiMediaCard (MMC)• Commercially available PC card adapter
Card reader	USB connection or parallel connection	<ul style="list-style-type: none">• Using a CompactFlash card• Commercially available CF card reader/ writer• Using an SD memory card/ MultiMediaCard (MMC)• Commercially available SD memory card reader/writer

Note

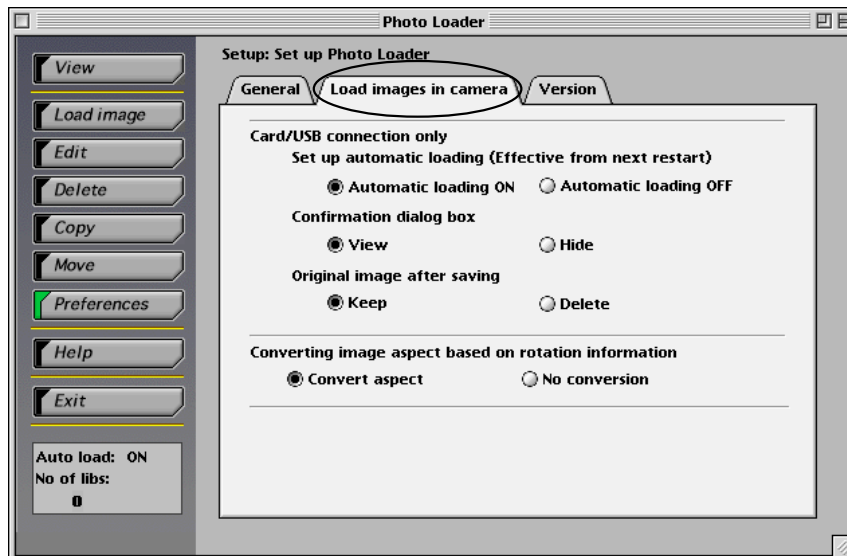
- It is recommended that the peripheral devices listed above be used to automatically load images recorded with digital cameras. To load images not from a digital camera, see “Loading images other than those recorded by digital cameras” on page 22.
- Images can be automatically loaded from the following cameras in addition to this camera.
DCF-compatible digital cameras or memory cards* (JPEG files only)
memory cards* of QV-7000SX and QV-5500SX (JPEG and AVI files)
* *Must be mounted on Macintosh as a drive.*
- Automatic loading is not available using serial connection.

Setting up automatic loading

1. Click the [Preferences] button from the function buttons.

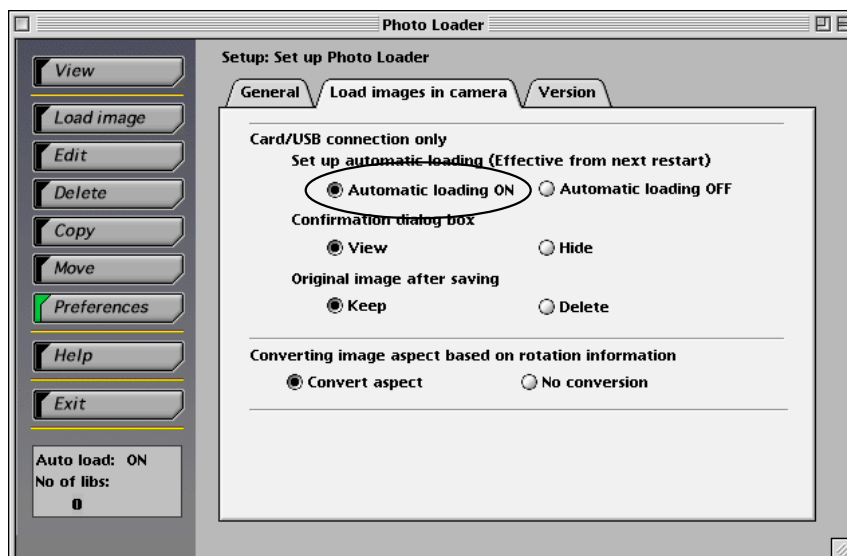


2. Click the <Load images in camera> tab.



3. Select “Automatic loading ON” from “Set up automatic loading”.

- “Automatic loading ON” is specified as the default.
- Select “Automatic loading OFF” to disable automatic loading.



4. Restart Photo Loader (Restarting is not necessary unless the settings have been changed.).




This completes the automatic loading settings.

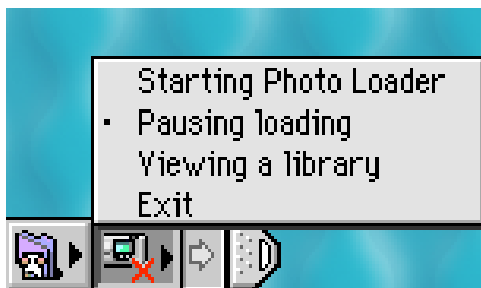
Images will be automatically loaded, when you connect the digital camera to the USB port of your Macintosh, or when you mount the memory card used to record pictures with the digital camera.




It will be turned "ON".

Important!

- Be sure to re-start Photo Loader after changing the Auto download settings. The changes will not take effect if Photo Loader is not restarted
- Check that the  icon is displayed on the control bar. This indicates that the monitoring program is running. If the  icon is displayed, click .



When the screen above is displayed, highlight “Pausing loading” and click with the mouse. “Pausing loading” will be unchecked.

If the icon with the camera only () is displayed, the monitoring program is not running. In this case, open the folder in which Photo Loader is to be installed and double-click “Desktop Watcher 1.1E” to run the monitoring program.

- To display a library after loading an image, you must first specify the browser to be used by selecting [Preferences]→“Browser to display libraries”. The browser will not be launched if it is not specified.

5. Connect the digital camera to the USB port or mount the memory card used to record pictures on your Macintosh.

- Displays the confirmation dialog.
- If the confirmation dialog is not required, change the setting by referring to page 41.



6. Click the [OK] button to start automatic loading.

- Images will be loaded from the digital camera, and a library will be created.
- Click the [Suspend] button to disable automatic loading.
- The operation 7 screen will be displayed if the digital camera (or memory card) has multiple image folders.

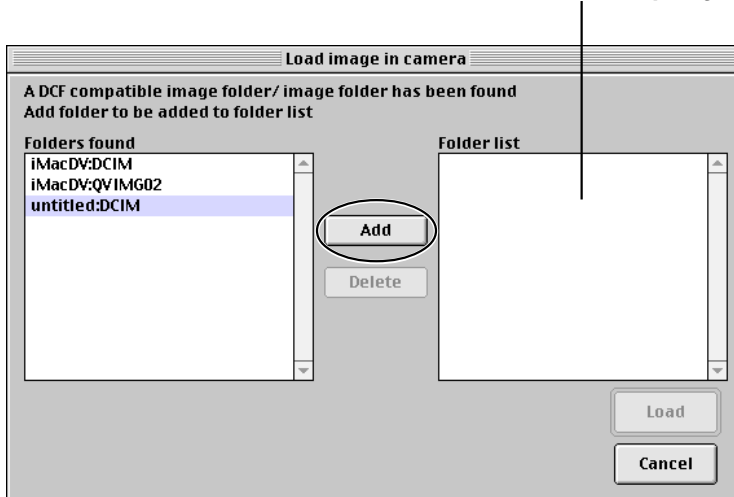
Note

Go to step 9 if the digital camera (or memory card) has only one image folder.

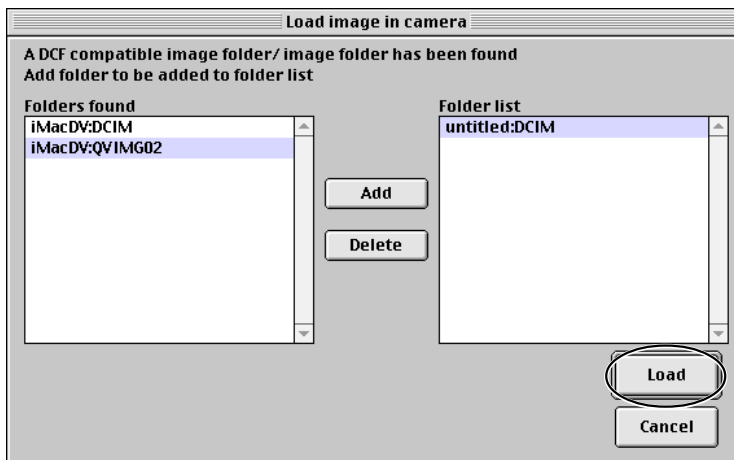
7. Select the folder containing the image data to be loaded and click the [Add] button.

To reselect an image to be loaded, select the folder from the folder list and click [Delete]. Then reselect the image to be loaded.

Folder names to be loaded will be displayed in the folder list.



8. Click the [Load] button.



- Images will be loaded in the selected image folder.
- Click the [Cancel] button to cancel image loading.
- When “Sort by date” is selected, the loading date confirmation dialog box will be displayed. Specify a date with the pull-down button and click [OK].



- If the following message appears when loading with “Sort by recording date”, see “Handling image loading errors” on page 25.



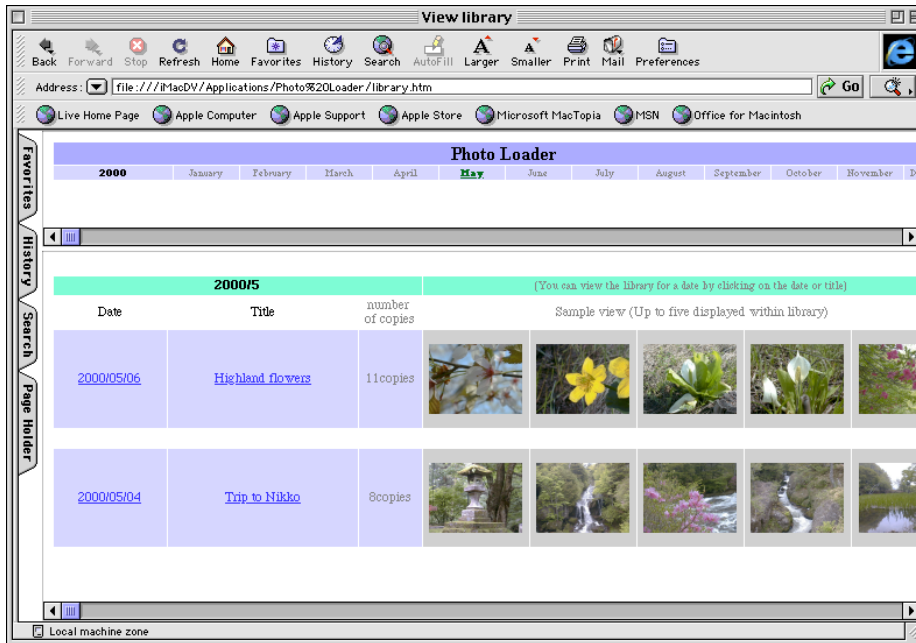
9. Enter a library name for the loaded images.

- Only valid when loading with “Sort by date” selected.
- Operation 10 screen will be displayed when loaded using “Sort by recording date”.
- See “Library sort method” on page 39 for “Sort by recording date”.
- You can enter up to 40 characters.
- You can enter a library name when “Yes” is set for “Enter title after loading”. The default is set to “No”.
- See “Enter title after loading” on page 40 for library name entry settings.

10. Click the [OK] button.

This completes image loading.

The Web browser is launched and the libraries created are displayed in calendar format.

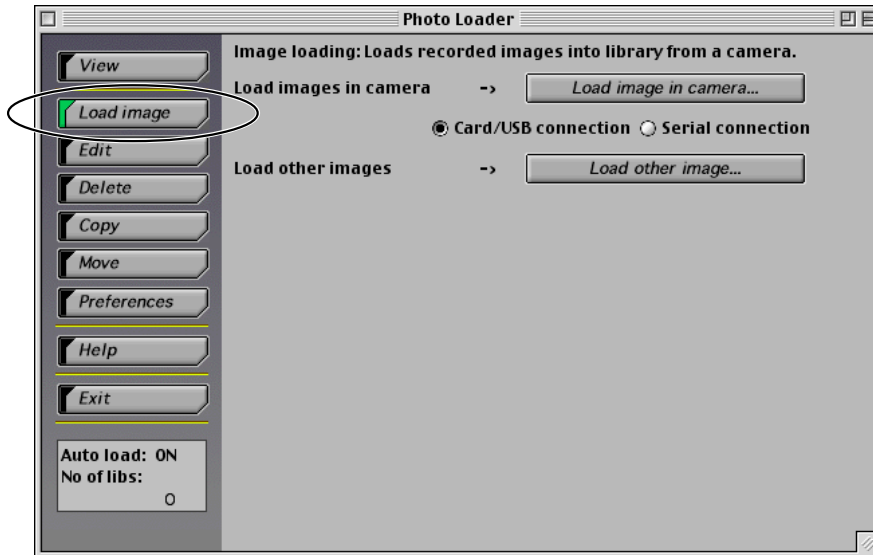


- See “Viewing a library” on page 27 for details of viewing a library.
- Change the setting if you do not want to display a library after loading images. See “Changing Photo Loader preferences” on page 39.

Manually loading images (for Card/USB connection)

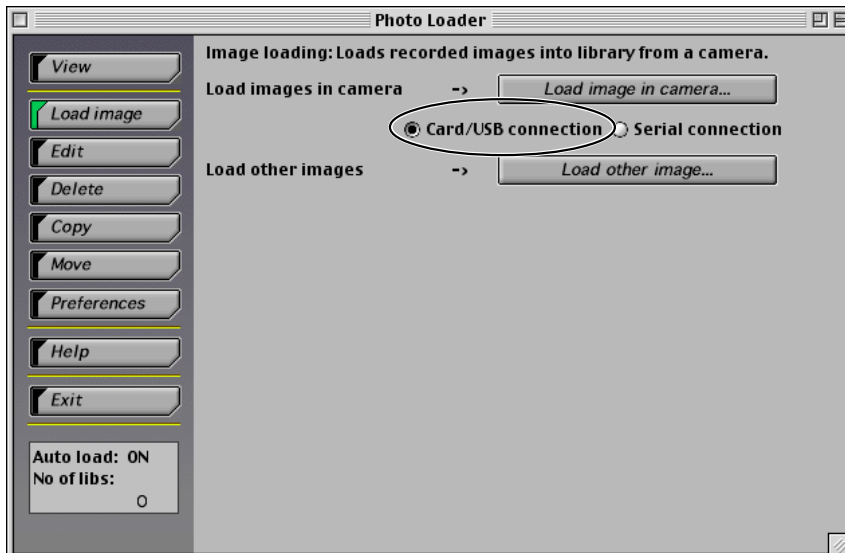
Image data recorded using a digital camera will be loaded into Photo Loader. When serial connection is selected, read “Manually loading images (for Serial connection)” on page 19.

1. Click the [Load image] button from the function buttons.



2. Select the “Load image in camera” option based on the connection between the digital camera (or memory card) and your Macintosh.

- Select “Card/USB connection”.



3. Click the [Load image in camera...] button.

4. Subsequent operations are the same as those for operation 7 on page 15.

Note

If the digital camera (or memory card) has only one image folder, subsequent operations are the same as those for operation 9 on page 16.

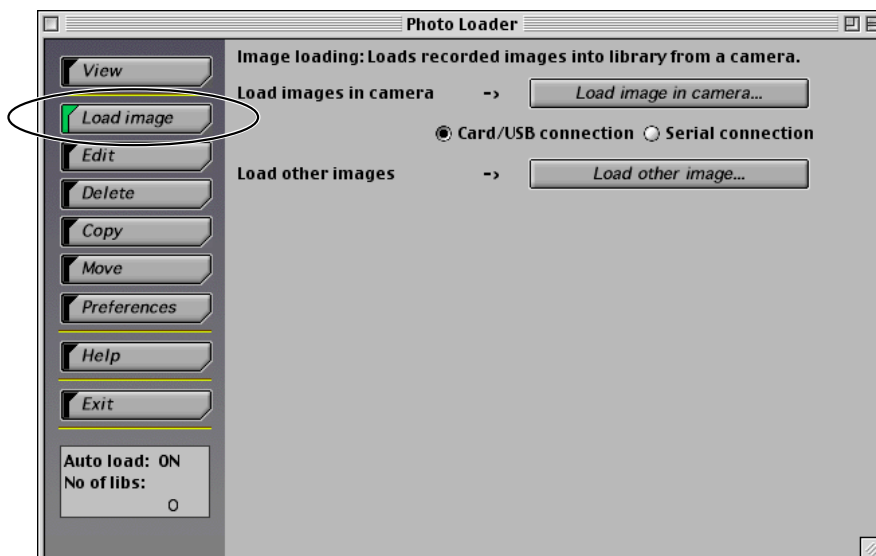
Manually loading images (for Serial connection)

Image data recorded using a digital camera will be loaded into Photo Loader. Read “Manually loading images (for Card/USB connection)” on page 18 if you have selected card/USB connection.

Important!

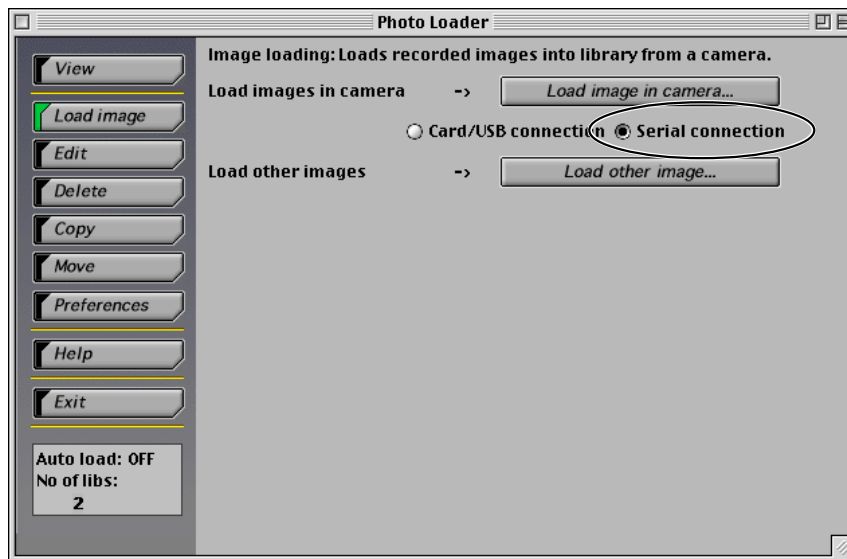
- A serial connection may not be possible depending on the digital camera model. For details, refer to the digital camera's user's guide.

1. Click the [Load image] button from the function buttons.



2. Select the “Load image in camera” option based on the connection between the digital camera (or memory card) and your Macintosh.

- Select “Serial connection”.



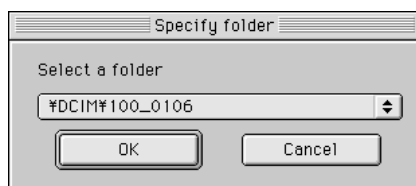
3. Click the [Load image in camera...] button.



4. Select either “Batch” or “Specified folder” from “Transfer unit”.

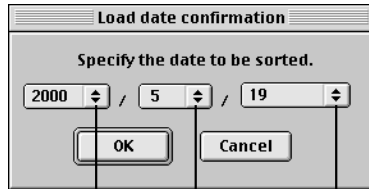
- Select “Batch” to load all images saved in the digital camera.
- Select “Specify folder” to specify a folder to load images saved in the digital camera.

5. If you select “Specify folder”, select image data to be loaded on the following screen.



6. Click the [OK] button.

- Images will be loaded from the digital camera connected.
- Click the [Cancel] button to cancel image loading.
- When “Sort by date” is selected, the loading date confirmation dialog box will be displayed. Specify a date with the pull-down button and click [OK].



Pull-down button

- If the following message appears when loading with “Sort by recording date”, see “Handling image loading errors” on page 25.



- See “Checking communication status between digital camera and Photo Loader (for Serial connection)” on page 8 for “Communication settings”.

7. Subsequent operations are the same as for operation 9 on page 16.

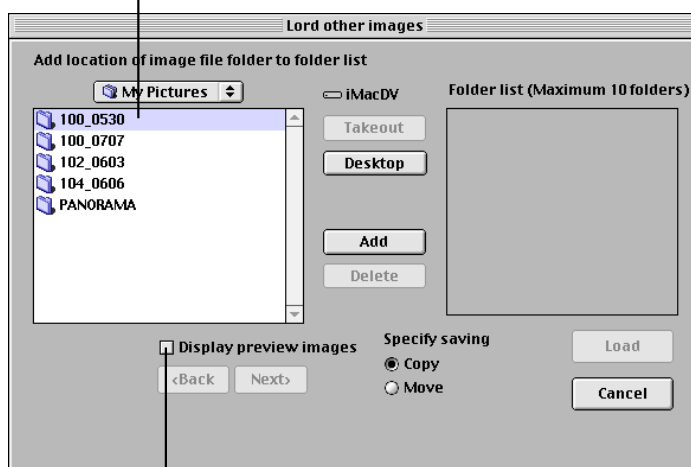
Loading images other than those recorded by digital cameras

Loads image data other than that taken with a digital camera into Photo Loader.

Image data saved in JPEG format or video data saved in AVI format can be loaded from the hard disk of your Macintosh or peripheral devices connected via a network.

- 1. Click the [Load image] button from the function buttons.**
- 2. Click the [Load other image...] button.**

The folders below the desktop will be displayed.

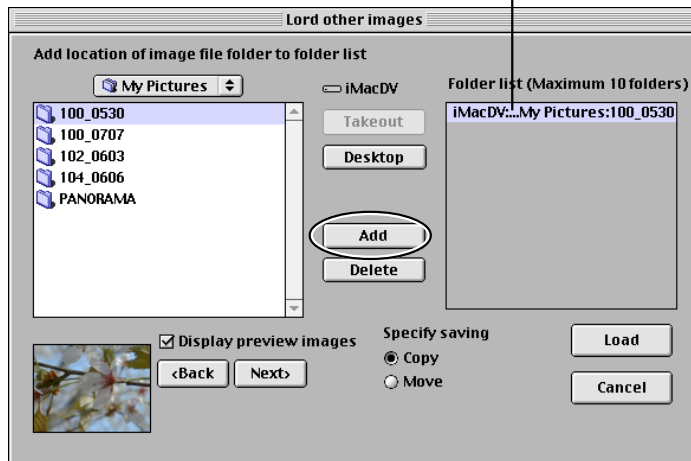


If "Display preview images" is checked with a loadable folder specified, the preview will be displayed.

3. Select the folder containing the image data to be loaded into Photo Loader and click the [Add] button.

To reselect an image to be loaded, select the image data from the folder list and click the [Delete] button. Then, reselect an image to be loaded.

Names of the images to be loaded are displayed in the folder list.



4. Select the method for loading images from “Specify saving”.

- “Copy” The source image data will be retained after the image is loaded.
- “Move” The image data will be deleted after the image is loaded.

* *You cannot select “Move” to load image data from the folder onto a network.*

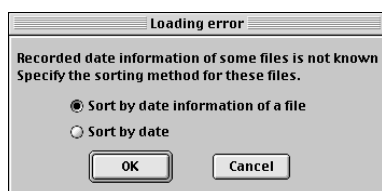
5. Click the [Load] button.

- Images will be loaded from the folder selected.
- Click the [Cancel] button to cancel image loading.
- When “Sort by date” is selected, the loading date confirmation dialog box will be displayed. Specify a date with the pull-down button and click [OK].



Pull-down button

- If the following message appears when loading with “Sort by recording date”, see “Handling image loading errors” on page 25.



6. Subsequent operations are the same as those for operation 7 on page 15.

Note

If the digital camera (or memory card) has only one image folder, subsequent operations are the same as those for operation 9 on page 16.

Important!

- About movie images recorded using a digital camera

Movie recording

QuickTime 4.0 or later is required to play back movie images (AVI files) recorded in Movie recording mode with a CASIO LCD digital camera.

Handling image loading errors (for “Sort by recording date”)

To load images by “Sort by recording date”, sort images on the Exif photographed date information of the image (JPEG) file and create a library. If the file has incorrect Exif recorded date information or the file does not have the information, a loading error dialog box will be displayed.

* *To load movie (AVI) files, sort images on the file date information (update date) and create a library.*

① **Select “Sort by date information of a file”.**

- Sort images on the file date information (update date) and create a library.
- To load images by specifying a date instead of using the file date information, proceed to step 3.
- Clicking the [Cancel] button loads the file with the correct Exif recorded date information and exits the process.



② **Click the [OK] button.**

- This loads the image.
- If a file with incorrect file date information is encountered, the loading date confirmation dialog box will be displayed.

③ **Specify a date with the pull-down button.**

- A library will be created with the specified date.
- Clicking the [Cancel] button loads only Exif and files (only Exif when ① is skipped) with the correct date information and exits the process.



— Pull-down button

④ **Click the [OK] button.**

- This loads the image.

■ Viewing a library

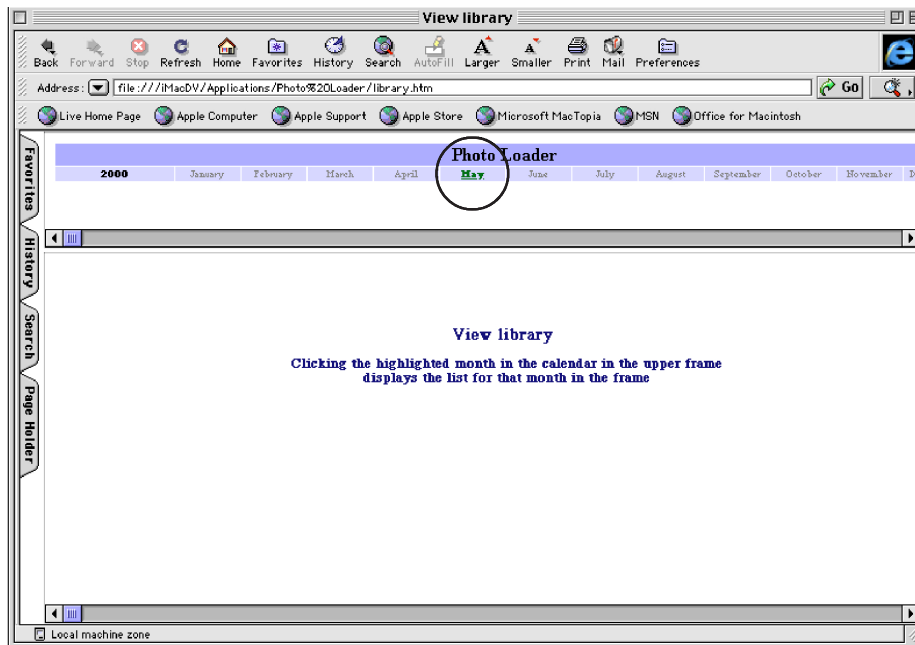
Photo Loader handles the folder saving image files as “Library”. This section describes how to list images in a library on the Macintosh screen.

- * *A browser is required to display a library.*
- * *The browser software to be used by Photo Loader must be specified after installing the browser software. The browser software must be selected using [Preferences]→“Browser to display libraries”.*

Viewing a library from Photo Loader

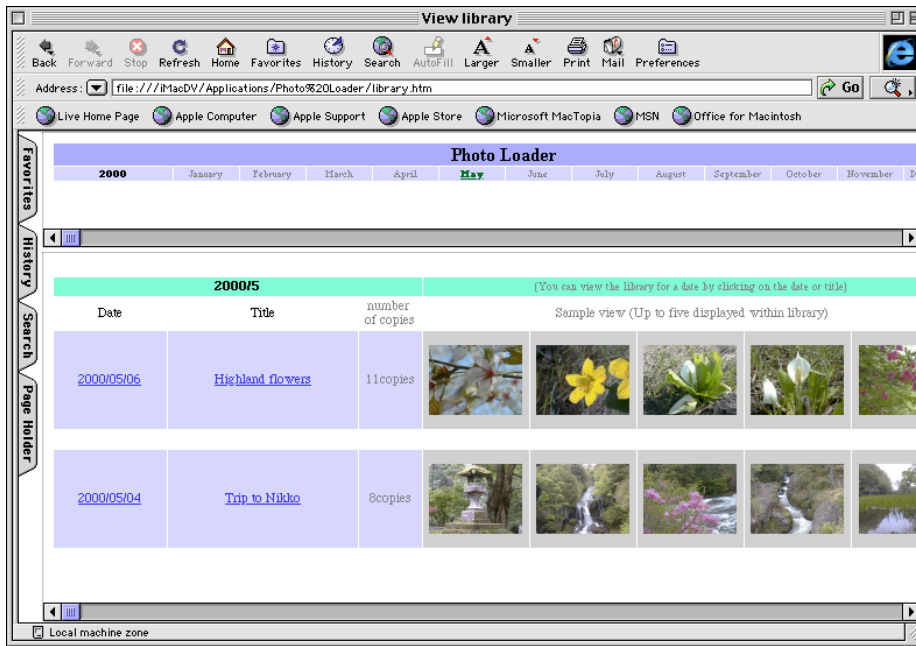
1. Click the [View] button from the function buttons.

The calendar is displayed for the years in which the image data was saved.



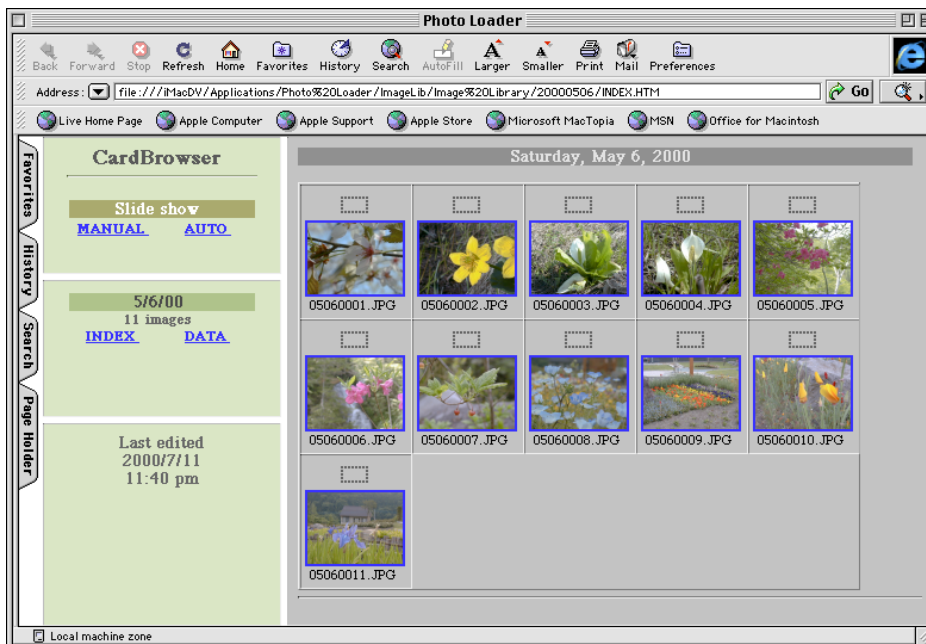
The months in which the image data was saved are highlighted.

2. Click the month for the libraries to be displayed.



3. Click the date or title for the libraries to be displayed.

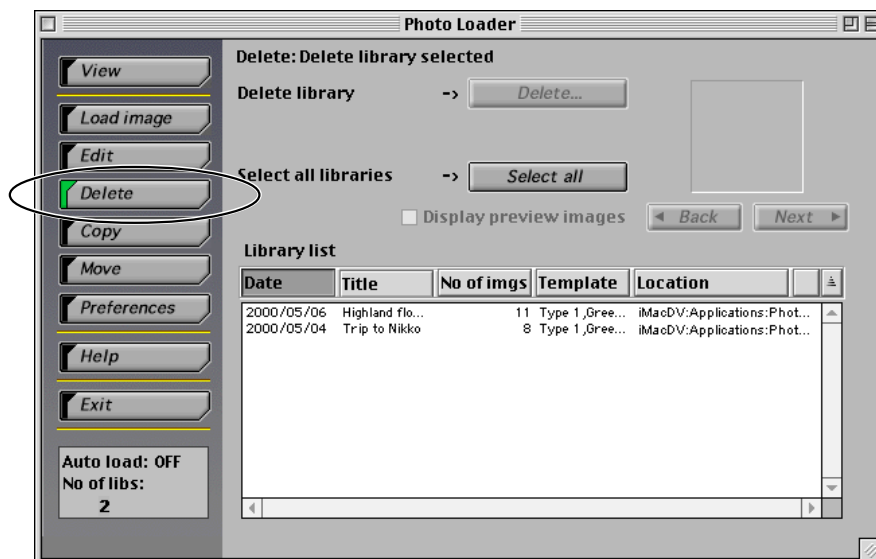
The library selected is displayed.



■ Deleting a library

This sub-section describes how to delete a Photo Loader library.

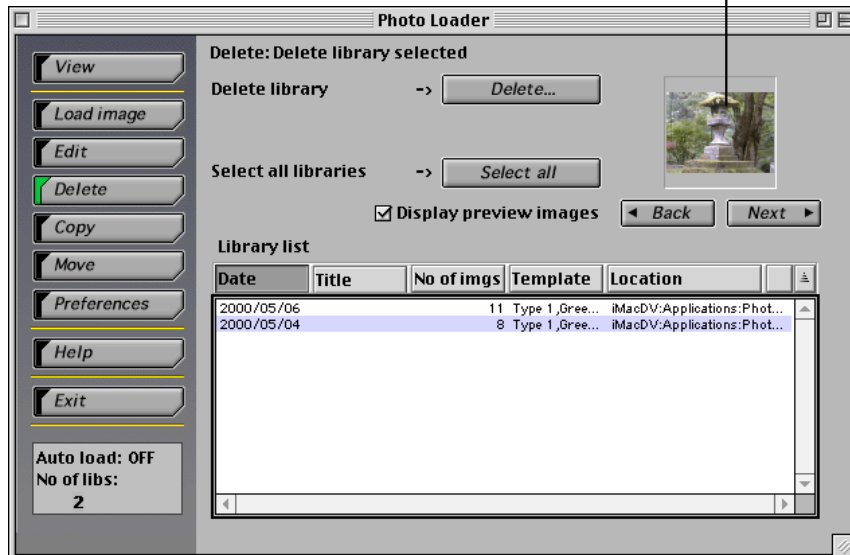
1. Click the [Delete] button from the function buttons.



2. Select the library to be deleted.

- Clicking the [Select all] button selects all the libraries.
- Checking “Display preview images” displays the images in the library selected.

The images in the library selected are displayed.



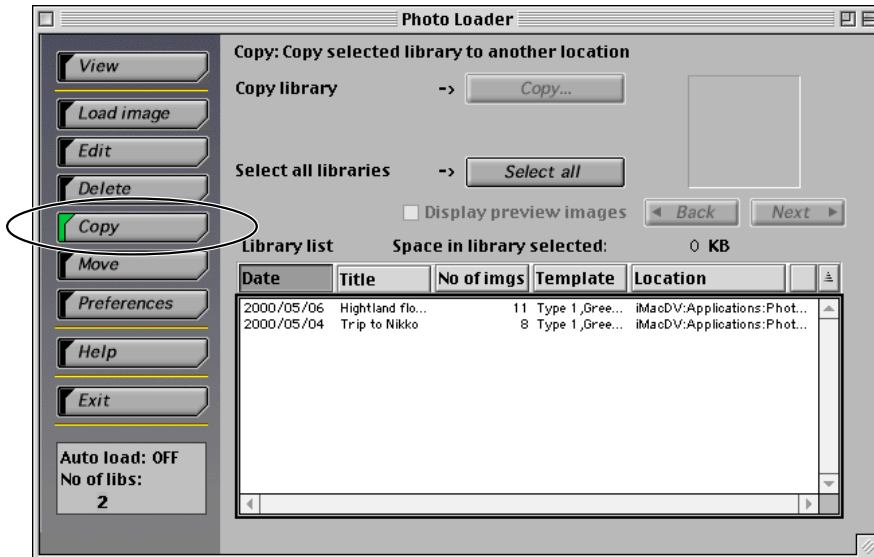
3. Click the [Delete...] button.

The library selected is deleted.

■ Copying a library

This sub-section describes how to copy a Photo Loader library. You can copy the library referenced by “Folder to save a library” to another folder. The copied library will be hidden from Photo Loader.

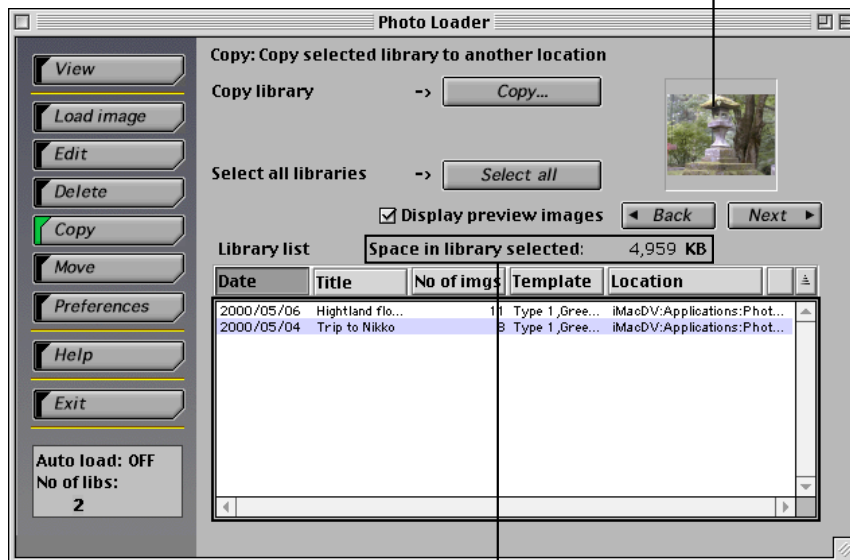
1. Click the [Copy] button from the function buttons.



2. Select the library to be copied.

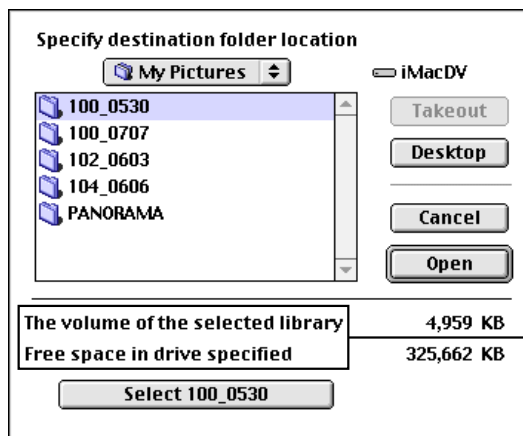
- Clicking the [Select all] button selects all the libraries.
- Checking “Display preview images” displays the images in the library selected.

The images in the library selected are displayed.



The capacity of the library selected is displayed.

- 3. Click the [Copy...] button.**
- 4. Specify the target folder.**



Displays the selected library capacity and drive space. Files cannot be copied if there is insufficient drive space.

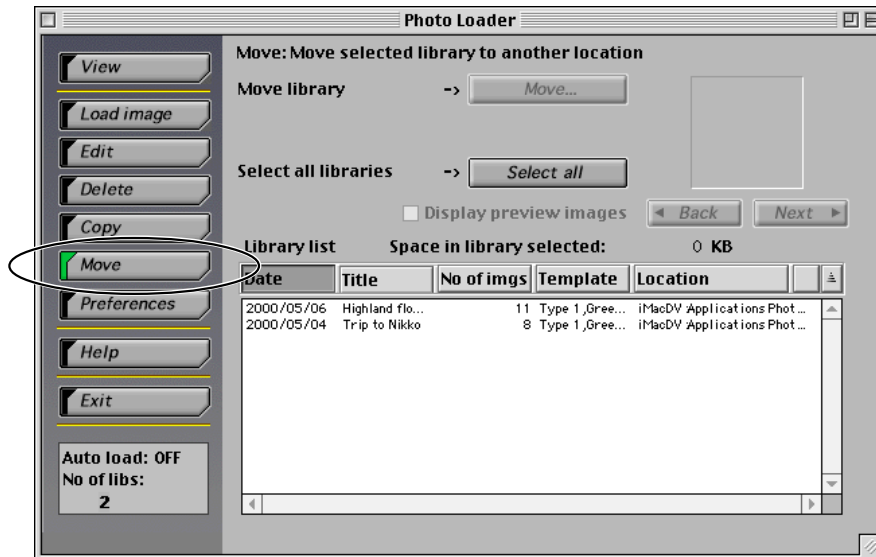
- 5. Click the [OK] button.**

- The library selected is copied to the specified folder.
- Click the [Cancel] button to cancel copying.

■ Moving a library

This sub-section describes how to move a Photo Loader library. “Library saving folder” allows the library to be moved from the active drive to a different drive. The library moved will not be visible in Photo Loader.

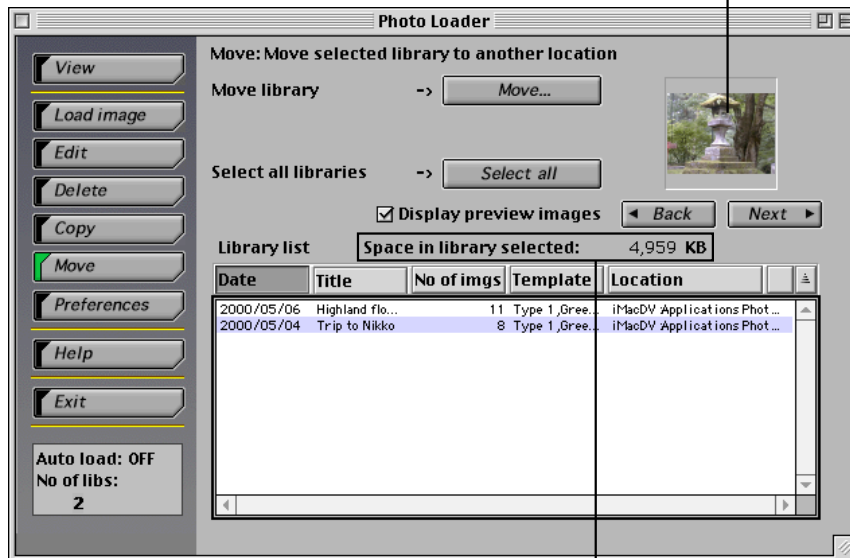
1. Click the [Move] button from the function buttons.



2. Select the library to be moved.

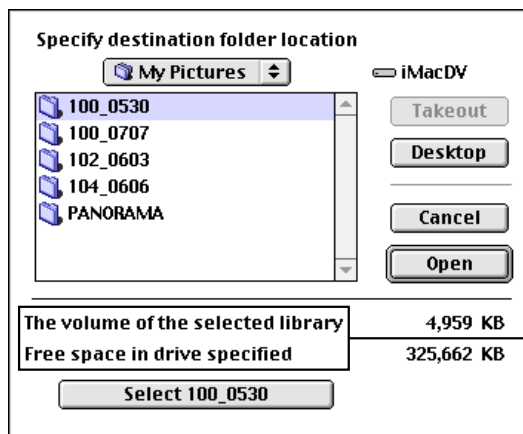
- Clicking the [Select all] button selects all the libraries.
- Checking “Display preview images” displays the images in the library selected.

Images within the library selected are displayed.



The capacity of the selected library is displayed.

3. Click the [Move] button.



Displays the selected library capacity and drive space. Files cannot be moved if there is insufficient drive space.

4. Specify the target folder.

5. Click the [OK] button.

- The library selected is moved to the specified folder.
- Click the [Cancel] button to cancel moving.

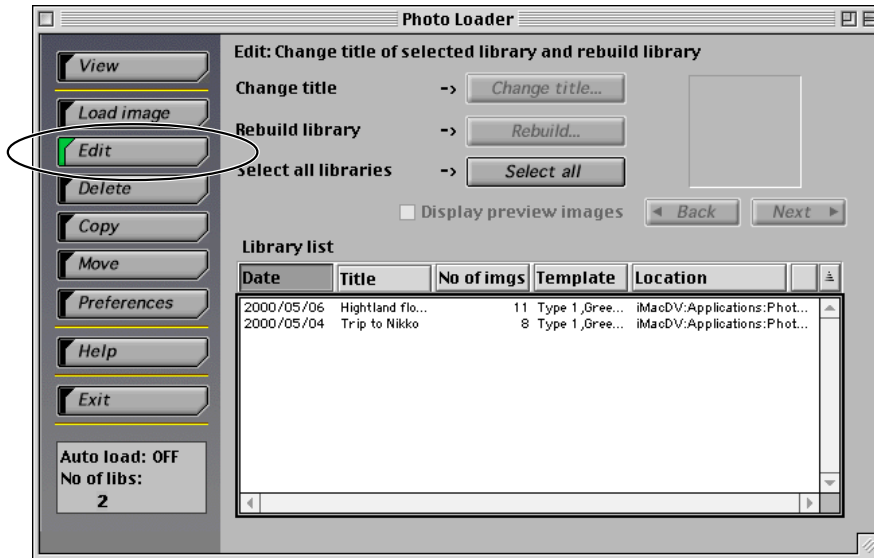
■ Editing a library

This sub-section describes how to modify a Photo Loader library. The following two operations are supported.

- Changing the title of a library
- Rebuilding a library

Changing the title of a library

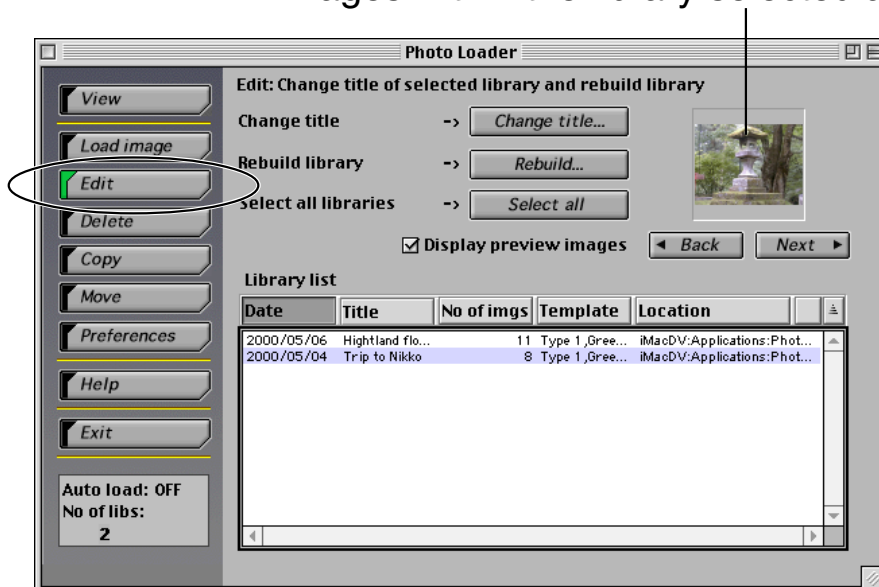
1. Click the [Edit] button from the function buttons.



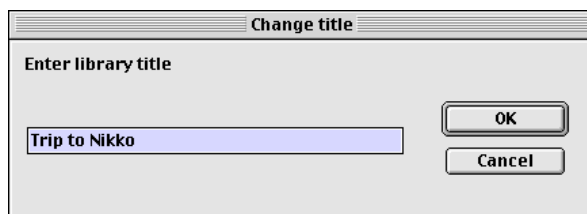
2. Select the library to change the title.

- Titles cannot be changed if multiple libraries are selected.
- Checking “Display preview images” displays the images in the library selected.

Images within the library selected are displayed.



3. Click the [Change title...] button.



4. Enter a title and click the [OK] button.

- The title will change to the new title entered.
- Click the [Cancel] button to cancel changing the title.

Rebuilding a library

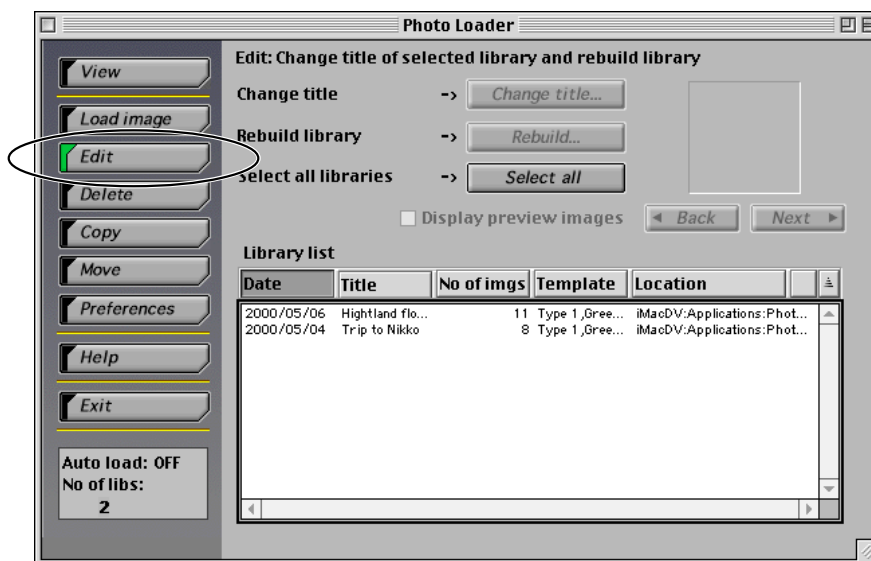
Rebuild a library in the following cases.

- To reflect templates selected for each library by selecting [Preferences] → <General> → “Select built-in template”.
- When a browser is used to view a library, but an error is displayed and no image appears.

Warning

- Re-editing will take time when there are large images in the library.

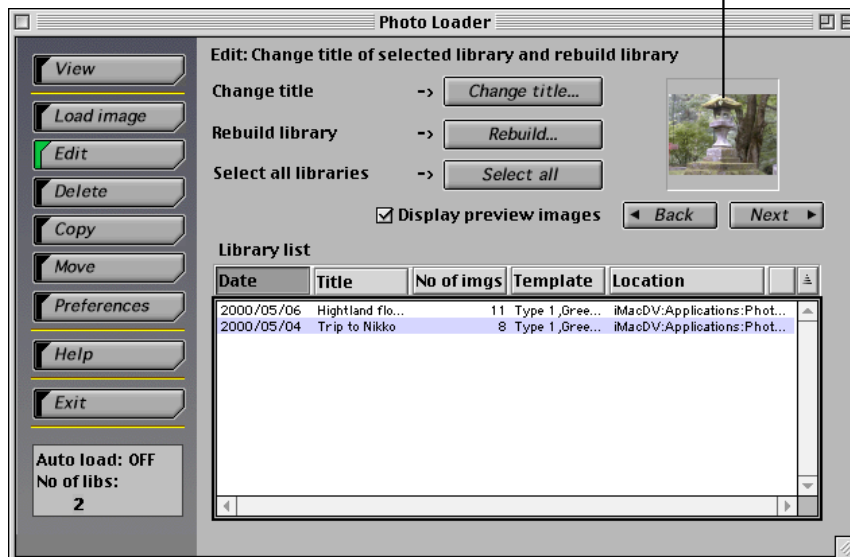
1. Click the [Edit] button from the function buttons.



2. Select the library to be rebuilt.

- Clicking the [Select all] button selects all the libraries.
- Checking “Display preview images” displays the images in the library selected.

Images within the selected library are displayed.



3. Click the [Rebuild...] button.

4. Click the [OK] button.

- The library selected is rebuilt.
- Click the [Cancel] button to stop library rebuilding.

Changing Photo Loader preferences

This sub-section describes the various Photo Loader preferences. Photo Loader preferences are broadly divided into following three types.

- **General**
- **Loading images in a camera**
- **Version**

■ **General**

- 1. Click the [Preferences] button from the function buttons.**
- 2. Click the <General> tab.**
- 3. Set the preferences as required.**

<General> covers the following preferences.

Library sort method

Specifies how to sort loading images and create a library when loading images.

There are two sorting methods, “Sort by recording date” and “Sort by date”.

- **Sort by recording date**

Sort by the date taken using a digital camera

Will be sorted according to the Exif recorded date information for the image (JPEG) file.

Movie (AVI) files will be sorted according to the file date information (update date).

Ex. The image file recorded on 2002/7/31 will be loaded into the folder “20020731”.

- **Sort by date**

New folders will be created and sorted every time images are loaded.

(Sorted by the date specified when the image is loaded)

Ex. The image file recorded on 2002/7/31 will be loaded into the folder “20020731_1”.

Folder to save library

Specify a folder to load images. Click the [Browse...] button to change the download destination. If it is changed, all libraries previously loaded will be moved to the new destination.

Enter title after loading

You can choose to enter a library title after loading images.

If “Yes” is selected, a dialog box appears for entering the library title after loading images into Photo Loader.

* *Titles can be entered after loading images only when the library sorting method is “Sort by date”. Titles cannot be entered in “Sort by recording date” mode. Find the date of the library created when the images were loaded, and enter a title by selecting [Edit] → “Change title”.
→ “Library sort method” on page 39.*

Execute [View library] after saving

You can choose to view all the libraries within Photo Loader after loading images.

If “Yes” is selected, you can view all the libraries within Photo Loader after saving (loading) images.

Selecting built-in template

Set the information displayed in the preview image. Select a library format displayed on the browser to load an image.

Browser for viewing the library

Select the browser software to be launched when you click the [View] button, or when you select “View library” on the control bar.

Select the browser for viewing the control bar library or when clicking the [Display] button.

- 1. Click the [Select Template] button.**

- 2. Select the template and click [OK].**

Run [Rebuild...] from the [Edit] menu if you want to make any revisions in the existing library. See page 37 “Rebuilding a library”

■ Loading images in camera

1. Click the [Preferences] button from the function buttons.
2. Click the <Load images in camera> tab.
3. Set the preferences as required.

<Load images in camera> includes the following preferences.

Set up automatic loading *1

Specifies whether or not to load images automatically. If “Automatic loading ON” is selected, images will be automatically loaded from a digital camera by the Photo Loader monitoring program.

Confirmation *2

Specifies whether or not to display the image loading confirmation dialog box. If “View” is selected, the confirmation dialog box will be displayed before loading an image.

Original image

Specifies whether or not to retain the original loaded image data. If “Keep” is selected, the original loaded image is retained after loading.

Important!

- *1, 2 and 3 are only available when peripheral units are in “Card/USB connection” while loading images.
- Photo Loader must be restarted after setting *1, otherwise, the setting will not operate correctly.

Convert image aspect based on rotation information

Sets whether or not to convert the image aspect when loading images. If “Convert aspect” is selected, a portrait image will be loaded as portrait image based on the rotation information, where applicable. Image aspect conversion may not be available for images loaded from certain digital cameras.

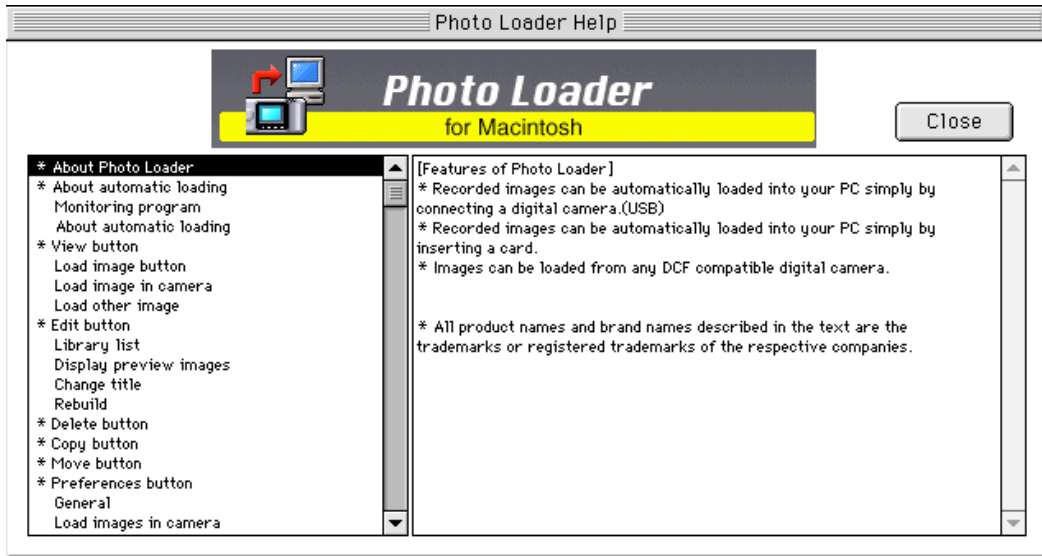
■ Version

Displays the Photo Loader program version.

- 1. Click the [Preferences] button from the function buttons.**
- 2. Click the <Version> tab.**

Viewing help

1. Click the [Help] button from the function buttons.



2. Click the desired item.

The item selected opens.

Exiting from Photo Loader

- 1. Click the [Exit] button from the function buttons.**
 - Photo Loader program ends.

Troubleshooting

If a problem occurs during use, see “Help”.

Glossary

This section describes terms used in this document that are especially difficult to understand.

● DCF

This stands for Design rule Camera File system. This is a rule to unify image data saving format to allow image data taken by a digital camera to be exchanged between digital cameras and peripheral units of various manufacturers.

● Exif

The file format with photograph information and thumbnail added to a JPEG format file.

● JPEG

A format for saving image data. The file extension is “.jpg”.

● AVI

A format for saving animation data. The file extension is “.avi”.

● Memorycard (CompactFlash/SD Memory Card/MultiMediaCard)

This is mainly used as a storage device for digital cameras. Image data recorded with a digital camera can be saved and called up from a memory card.

● Browser

Browser software. Internet Explorer is the software used to read data files saved in HTML format, and is used to list Photo Loader libraries.

● Library

Folder handled by Photo Loader. Images loaded by Photo Loader are saved in a folder called a library.